

## Increase The Percentage of Coal Conservation Deposited in ROM Drainage Areas

Aifah<sup>1\*</sup>, Riyan Afif hendrawan<sup>2</sup>, Fransiskus Bimantoro Agung<sup>4</sup>,  
Jepri Victor<sup>5</sup>

PT Antareja Mahada Makmur, Jobsite Borneo Indobara Hati'if,  
Kalimantan Selatan, Indonesia  
Email: [aifah\\_11@ppa.co.id](mailto:aifah_11@ppa.co.id)

\*Correspondence

### ABSTRACT

**Keywords:** Coal conservation; fine coal management; environmental pollution; ROM drainage area; root cause analysis; Fishbone diagram.

The research aims to increase the conservation percentage of trapped coal in the ROM A1 drainage area from February to June 2024 by improving fine coal management and adding value to the conservation of PJP. This study also seeks to reduce penalties from fine coal blending into sellable products and minimize environmental pollution in the ROM A1 area. The study employs a descriptive method, focusing on implementing coal conservation in drainage areas by determining the scope of each conservation object. Root cause analysis using a Fishbone diagram was used to identify key improvement strategies for increasing coal conservation percentages. Initial observations in the ROM A1 drainage area revealed 6,829 tons of unpreserved fine coal, primarily due to rainwater runoff. The results showed that with proper implementation of conservation techniques, including the installation of fine coal traps and the centralization of fine coal in collection points, the conservation rate improved from 0% to 62% by April 2024. In tangible terms, 83 tons of fine coal, worth IDR 26,434,928, were saved, contributing to both environmental conservation efforts and economic benefits for the company. This study highlights the importance of continuous coal conservation efforts, especially in mining operations where environmental and financial impacts can be significant.



### Introduction

Mineral and coal conservation is an effort to optimize the management, utilization, and data collection of mineral and coal resources in a measurable, efficient, responsible, and sustainable manner. Mineral and coal conservation is one of the aspects that must be carried out in accordance with the Mineral and Mineral Law Attachment VII of the Ministry of Energy and Mineral Resources No. 1827 K/30/MEM/2018 to realize the principles of good mining techniques (Good Mining Practice). Planning for the optimal implementation of mineral and mineral conservation is carried out by first determining the scope of mineral and mineral conservation in detail as well as evaluating and monitoring the implementation and the obstacles that occur in its implementation. The

scope of coal conservation includes mining recovery, processing recovery, low-quality coal, residual processing products, marginal reserves, and unmined reserves.

PT Antareja Mahada Makmur is a subsidiary of PPA, which is also a coal contractor company. The types of activities carried out include stripping the rock/cover soil subfield excavation, loading and removing the layer (stripping) of rock/cover soil with or without being preceded by blasting, and Transportation Services. With operational activities that are closely related to coal, the implementation of good mining engineering principles, especially the conservation aspect of the implementation of coal conservation through determining the scope of conservation objects and solving problems that occur after the evaluation process so that it can be followed up, is something that must be understood and considered in the implementation of mining activities.

The objectives of this study are:

1. Increasing the percentage of coal conservation deposited in the new ROM A1 drainage area in February – June 2024 through good fine coal management, and adding value to the PJP conservation aspect
2. Saving penalty costs from fine coal that is debledned into products sold by the owner
3. Reduces the level of environmental pollution in the new ROM A1 area.

## **Research Methods**

The research method used is descriptive. This study will explain the implementation of the drainage area's conservation level by determining the scope of each conservation object. This study also compared what can be done to increase the percentage of coal conservation deposited in the new ROM A1 drainage area with Rootcouse analyst Fishbone.

## **Results and Discussion**

### **The Root of the Problem**

In the Ministry of Energy and Mineral Resources No. 1827 of (2018) concerning Guidelines for the Implementation of Good Mining Engineering Principles, especially in Appendix VII concerning Guidelines for the Implementation of Mineral and Coal Conservation, it is stated straightforwardly regarding the scope and objects of mineral and coal conservation. There are 8 (eight) mineral and coal conservation objects, including mining recovery, processing recovery, low-quality coal, low-grade minerals, accompanying minerals, marginal reserves, residual processing and refining products, and unmined reserves (Dzakir et al., 2023; Singo, 2020; Young et al., 2022).

PT Antareja Mahada Makmur Site Borneo Indobara is engaged in Mining contractor services with the process business of coal transportation and loading services (ROM Management). This is, of course, very related to the implementation of the conservation of the new ROM A1 condition. When the Lost Coal observation was carried out, coal splatters in drainage were found, which were suspected to be caused by dissolved rainwater. Improvements focus on the new A1 ROM due to its longer lifespan.



Increase The Percentage of Coal Conservation Deposited in ROM Drainage Areas

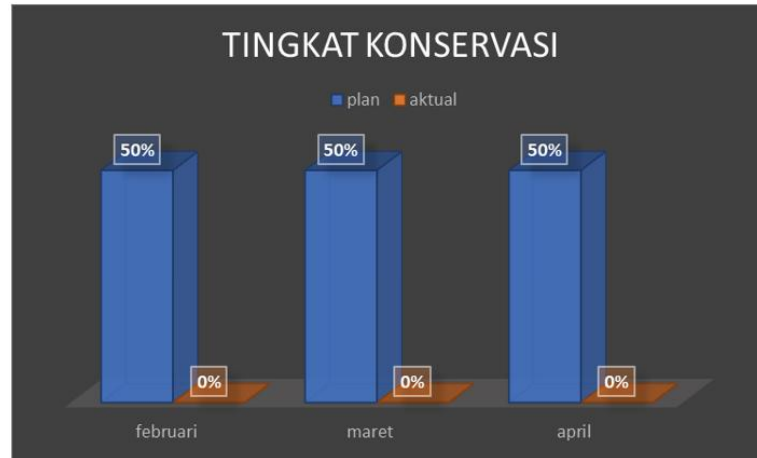


Figure 3. Conservation Level

Based on the data graph above, the conservation rate of fine coal in the ROM A1 N drainage catchment area in November – January is still 0% or has not been implemented. Therefore, it is necessary to carry out coal conservation in the catchment area of ROM A1 drainage (Eterigho-Ikelegbe et al., 2021; Harrar et al., 2022; Vidya & Ilianta, 2020).

<b>Quality</b>	Meningkatkan presentase konservasi coal terendap pada area drainase ROM A1 baru pada bulan Februari – April 2024 melalui pengelolaan fine coal yang baik, dan penambahan nilai pada aspek konservasi PJP
<b>Cost</b>	tonase x Rp 19.000 (1\$ coal getting & Rp 4.000 manajemen rom), tonase x SR x 2\$ (pembayaran OB sesuai SR), dan penvelamatan biaya pinalti sebesar tonase x SR x 2\$ . Fine coal yang deblending menjadi produk terjual oleh owner sebesar tonase x HBA (36,32 \$)
<b>Delivery</b>	Pengelolaan fine coal pada area drainase ROM A1 baru tersampaikan dengan baik kepada GL ROM pada saat sosialisasi sehingga dapat berjalan.
<b>Safety</b>	Mengurangi tingkat pencemaran lingkungan pada area ROM A1 baru
<b>Moral</b>	Meningkatkan kesadaran pentingnya pengelolaan fine coal pada area drainase

Figure 4. Estimated QCC

NO FAKTOR	KONDISI SEHARUSNYA	KONDISI AKTUAL	
1	METHODE	Terdapat sistem konservasi batubara yang terbawa air	belum terdapat sistem endapan fine coal yang terbawa air
2	MATERIAL	Material fine coal di drainase diblending dan dijadikan produk	fine coal pada area drainase belum diblending dan dijadikan produk
3	ENVIRONMET	Terdapat area konservasi fine coal di drainase	belum terdapat area untuk endapan fine coal pada drainase
4	MAN	Pekerja ROM melakukan konservasi batubara di drainase	Pekerja ROM tidak mengkonservasi batubara di drainase

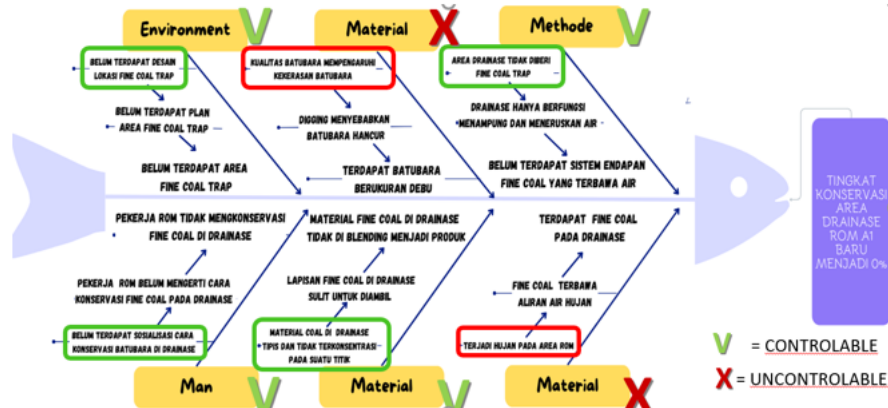


Figure 5. Root cause Analyst -Fishbone

Planning

The estimated QCC benefits above are the baseline VS Target in the coal conservation level in the new ROM A1 drainage area based on the Rootcause Analyst fishbone (Bazalgette et al., 2022). A plan for improvement ideas from conservation problems related to fine coal emerges as follows:

Table 1. QCC Plan

NO	CATEGORI	WHAT The Root of the Problem	HOW Corrective action plan	WHY Reasons for the Repair Plan	MoE Process KPIs	WHO PIC	WHE N Due Date	WHERE E Locati on	HOW MUCH Cost
2	Material	Coal material in drainage is thin and	Picking up fine coal that has been concentrated in the control box	Fine coal material s in the drainage	Production	Ryan , GL RO M	Week 4 April 2024	ROM A1	2,8 jam x 225.000 Rp <b>630.000</b>

Increase The Percentage of Coal Conservation Deposited in ROM Drainage Areas

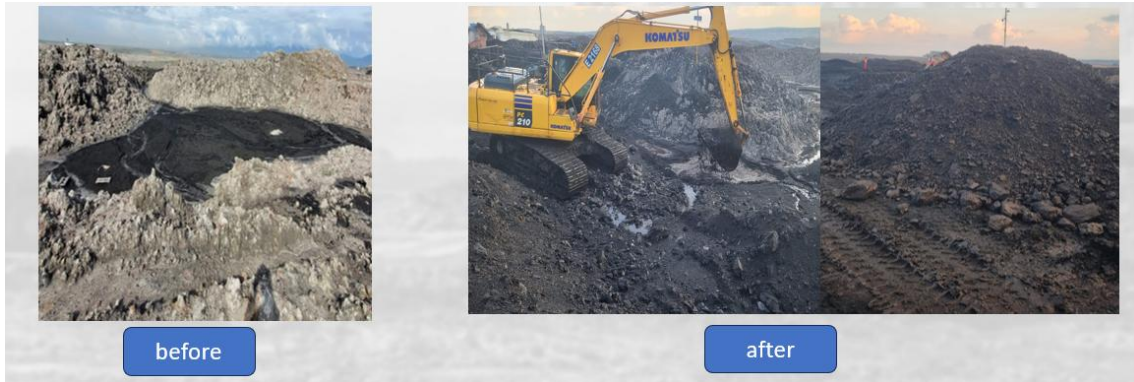
NO	CATEGORY	WHAT The Root of the Problem	HOW Corrective action plan	WHY Reasons for the Repair Plan	MoE Process KPIs	WHO PIC	WHE N Due Date	WHERE Locati on	HOW MUCH Cost
		not concentrated at a point		area can still be deblended into products					
3	Environment	There is no design for the location of the fine coal trap	Create a fine coal trap location design	Some areas can be used as a fine coal deposition system	Production	Ryan, GL ROM M	Week 3 January 2024	ROM A1	-
4	Man	There has been no socialization of how to conserve coal in drainage	Conducting socialization/study of coal conservation in drainage	So that workers in ROM know how to conserve coal in drainage	Production	Ryan, GL ROM M	Week 3 January 2024	ROM A1	-

Implementation of the Fix Idea

NO.	What	Before Condition	After Conditions
1	METHODE	The drainage area is not given a fine coal trap	In the drainage area, there is a fine coal trap

Figure 6 Methode

NO.	What	Before Condition	After Conditions
2	MATERIAL	Coal material in drainage is thin and not concentrated at a point	Fine coal extraction that has been concentrated in the controlbox



**Figure 7. Material**

NO.	What	Before Condition	After Conditions
3	ENVIRONMENT	There is no design for the location of fine coal deposits	There is a design for the placement of the fine coal sedimentation system



**Figure 8. Environmen**

NO.	What	Before Condition	After Conditions
4	MAN	There has been no socialization of how to conserve coal in drainage	There is socialization of how to conserve coal in drainage

## Increase The Percentage of Coal Conservation Deposited in ROM Drainage Areas

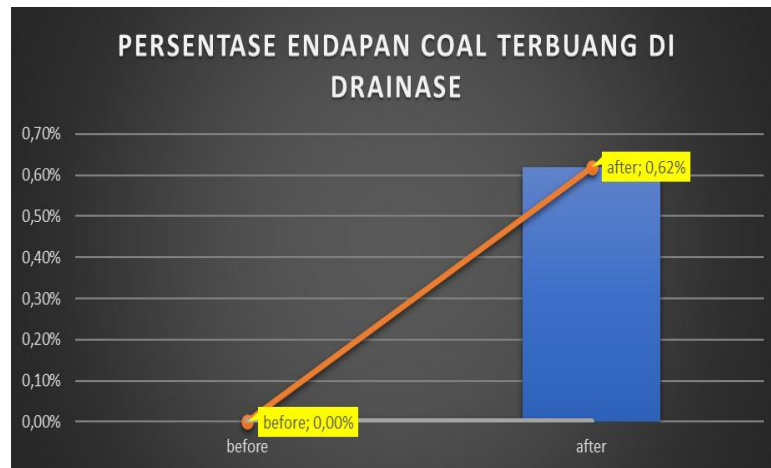


### Evaluate Results

Based on the results of the evaluation, there was a significant increase in coal deposits in the ROM A1 New drainage area from 0% to 62% for the period of February – April 2024.

periode endapan	tanggal pengambilan	kode box	jumlah bucket coal produk (m3)			
februari	15-Feb-24	D	10			
februari	15-Feb-24	C	9			
februari	20-Feb-24	A	12			
februari	20-Feb-24	B	10			
maret	25-Mar-24	E	8			
maret	02-Apr-24	F	8			
april	16-Apr-24	C	6			
april	19-Apr-24	A	10			
april	01-May-24	E	5,5			
april	01-May-24	A	14			
<b>Jumlah Pengambilan</b>	<b>Volume Endapan Tiap Box</b>	<b>Volume Endapan</b>	<b>Endapan Terkonservasi</b>	<b>Persentase Terkonservasi</b>		
10	150	150	92,5	62%		
<b>periode</b>	<b>Koefisien Limpasan ( C )</b>	<b>Intensitas Hujan (I) (mm/jam)</b>	<b>Luas Area Catchment (1/2 A) (Km2)</b>	<b>Jam Hujan</b>	<b>Debit (Q) ( m3/s)</b>	<b>Debit/Jam (m3/jam)</b>
februari	0,9	3,9	0,04075	123,07	0,040	143,15
maret	0,9	3,3	0,04075	85,74	0,034	121,12
april	0,9	7,37	0,04075	64,3	0,075	270,51
<b>AVERAGE</b>	<b>0,9</b>	<b>4,86</b>	<b>0,04075</b>	<b>91,04</b>	<b>0,050</b>	<b>178,26</b>

Figure 9. Calculation of Wasted Coal Slag in Drainage



**Figure 10. Percentage of Coal Slag Wasted in Drainage**

The tangible benefits obtained are 83 tons of fine coal saved from the drainage area worth Rp. 26,434,928 in terms of mining services, which can continue in the following month based on coal in the control box and coal sales of 83 tons worth Rp. 49,067,390. Meanwhile, the intangible benefits are an additional conservation effort in the 2024 PJP assessment.

Comparison of the previous QCC estimate Baseline increased as follows:

a) Quality

Saving wasted coal in drainage areas by 0.2% of runoff water volume

b) Cost

83 tons of coal saved by mining services worth Rp. 26,434,928, coal sales of Rp. 49,067,390

c) Delivery

The management of fine coal in the ROM A1 drainage area was well conveyed to the new ROM A1 workers at the time of socialization

d) Safety

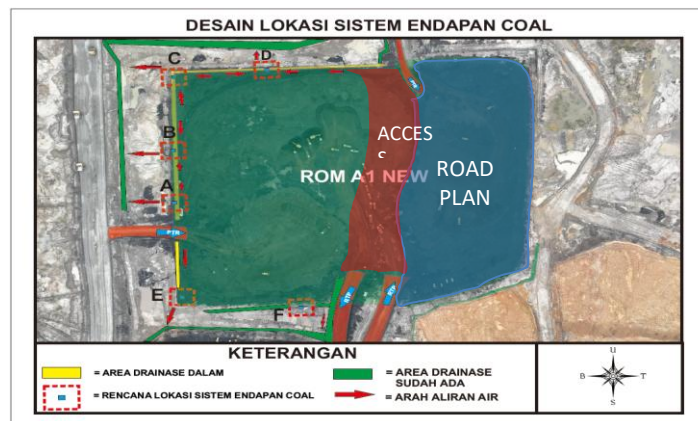
Reducing the level of environmental pollution in the ROM A1 new area

e) Moral

Increased awareness of ROM workers on the importance of fine coal management in drainage areas

### Next QCC Ideas

After an improvement to the Baseline of planning and implementation of QCC Implementation of the Coal Slag System, the optimization of sediment in the drainage area on all sides of the initial ROM formation.



## Conclusion

The implementation of mineral and mineral conservation starts from the planning stage to the implementation of the plan for mining activities and the evaluation of the implementation of these activities. The implementation of conservation aspect activities in the form of a control box (Fine coal management in the ROM A1 New drainage area) to reduce the level of pollution in the mining environment that the next QCC idea needs to be further improved related to the conservation aspect.

## Bibliography

- Arif, I. (2018). *Nikel Indonesia*. PT. Gramedia Pustaka Utama.
- Bazalgette, L., Aamri, N., Field, C., Bos, R., Tooqi, S., Wei, L., Nofli, K., Manji, K., Hadhrami, W., Shizawi, W., Hasni, A., Shuaili, S., Shuaili, K., Al Bahri, S., & Al Jabri, Y. (2022, October 31). Natural Fractures Help Unlocking Tight Carbonates: Re-Developing the Natih B Reservoir in a Giant Field in the Sultanate of Oman. Day 1 Mon, October 31, 2022. <https://doi.org/10.2118/211336-MS>
- Dzakir, L. O., Dullah, N. M., Priyana, Y. L. O., Yudha, W., Kurnia, LM. H., Kadar, M. I., Shaddad, A. R., Amir, Muh. K., Ambarsari, I. S., & Aldiyansyah, A. (2023). *Teknis Penambangan Nikel*. CV. Tohar Media.
- Eterigho-Ikelegbe, O., Harrar, H., & Bada, S. (2021). Rare earth elements from coal and coal discard – A review. *Minerals Engineering*, 173, 107187. <https://doi.org/10.1016/j.mineng.2021.107187>
- Habel, M., Nowak, B., & Szadek, P. (2023). Evaluating indicators of hydrologic alteration to demonstrate the impact of open-pit lignite mining on the flow regimes of small and medium-sized rivers. *Ecological Indicators*, 157, 111295. <https://doi.org/10.1016/j.ecolind.2023.111295>

- Harrar, H., Eterigho-Ikelegbe, O., Modiga, A., & Bada, S. (2022). Mineralogy and distribution of rare earth elements in the Waterberg coalfield high ash coals. *Minerals Engineering*, 183, 107611. <https://doi.org/10.1016/j.mineng.2022.107611>
- Juwono, P. T., & Subagiyo, A. (2018). *Sumber Daya Air dan Pengembangan Wilayah: Infrastruktur Keairan Mendukung Pengembangan Wisata, Energi, dan Ketahanan Pangan*. Universitas Brawijaya Press.
- Keputusan Menteri ESDM No. 1827.K/30/MEM/ESDM/2018 tentang Kaidah Teknis Pertambangan Yang Baik
- Keputusan Menteri ESDM No. 1806.K/30/MEM/ESDM/2018 tentang Pedoman Pelaksanaan Penyusunan, Evaluasi, Persetujuan Rencana Kerja dan Anggaran Biaya, serta Laporan pada Kegiatan Usaha Pertambangan Mineral dan Batubara
- Keputusan Direktur Jenderal Mineral dan Batubara No. 1827.K/30/DJB/2020 tentang Petunjuk Teknis Pelaksanaan Konservasi Mineral dan Batubara dalam rangka Pelaksanaan Kaidah Teknis Pertambangan Yang Baik.
- Peraturan Menteri ESDM No. 26 Tahun 2018 tentang Kaidah Pertambangan Yang Baik dan Pengawasan Pertambangan Minerba
- Singo, N. K. (2020). In Search of the Possible Economic Potential, Through Conceptual Study on Reclamation, of Defunct Mine Residue Areas for Development Purposes: Case Study of Musina Copper Mine, Giyani Louis Moore Gold Mine, Zwigodini Nyala Magnesite Mine, South Africa. University of Johannesburg (South Africa).
- Vidya, D., & Ilianta, I. (2020). Ruang Lingkup dan Objek Konservasi Sumber Daya Mineral dan Batu Bara. *Perhapi: Prosiding Temu Profesi Tahunan Perhapi*, 221–232.
- Wills, B. A., & Finch, J. (2015). *Wills' Mineral Processing Technology: an introduction to the practical aspects of ore treatment and mineral recovery*. Processing Technology: An Introduction to the Practical Aspects of Ore Treatment and Mineral Recovery. Butterworth-heinemann.
- Young, R. E., Gann, G. D., Walder, B., Liu, J., Cui, W., Newton, V., Nelson, C. R., Tashe, N., Jasper, D., Silveira, F. A. O., Carrick, P. J., Hägglund, T., Carlsén, S., & Dixon, K. (2022). International principles and standards for the ecological restoration and recovery of mine sites. *Restoration Ecology*, 30(S2). <https://doi.org/10.1111/rec.13771>